

# COMMUNITY PRE-CONSTRUCTION MEETING

## *Patterson Pass Road Safety Improvements in the Vicinity of Mile Marker 6.4*

Alameda County Public Works Agency

June 25, 2015

6:00 pm – Open House

# PROJECT TIMELINES

November 7, 2013	Public Meeting to Gather Community Input
January 29, 2014	Patterson Pass Road Safety Study Community Meeting and General Discussion of Safety Improvement Project at M.M. 6.4
Feb 2014 – March 2015	Project Design
June 2, 2015	Contract Awarded to RGW Construction
June 25, 2015	Community Pre-Construction Meeting
July 7, 2015	Start Road Closure and Construction at MM 6.4





# Project Location

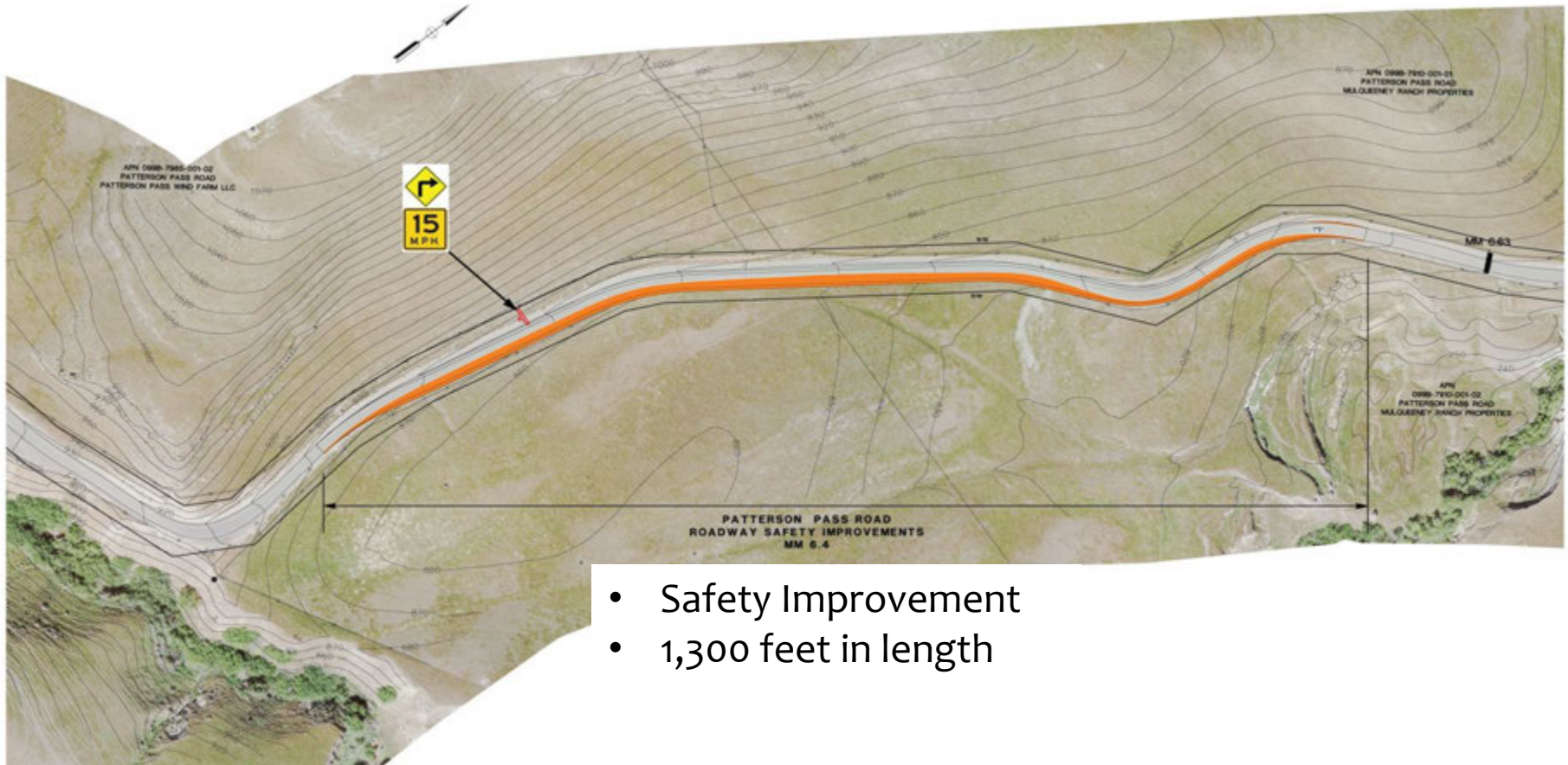


Mile  
Marker  
6.4

- Safety Improvement
- 1,300 feet in length

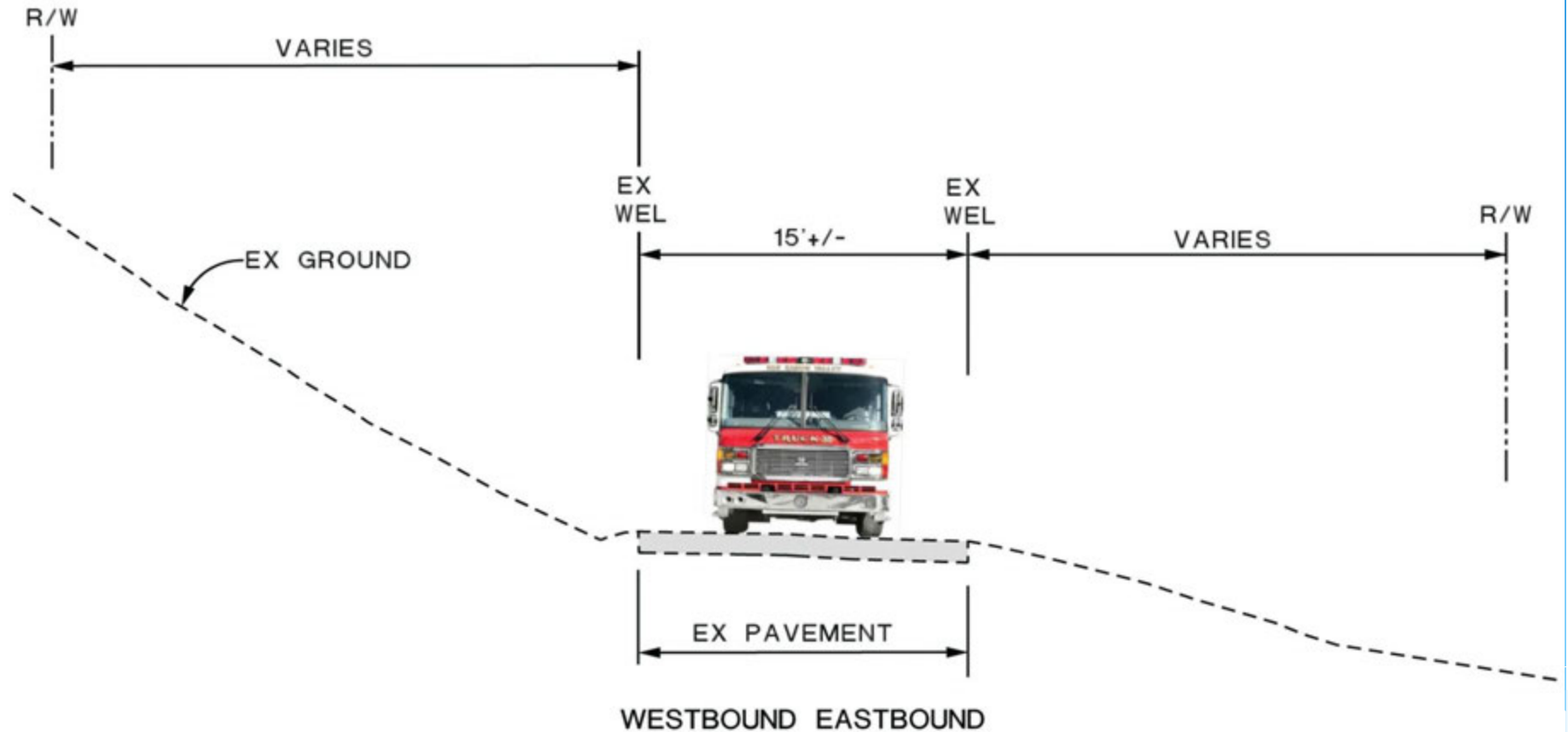


# Patterson Pass Road Project Limits

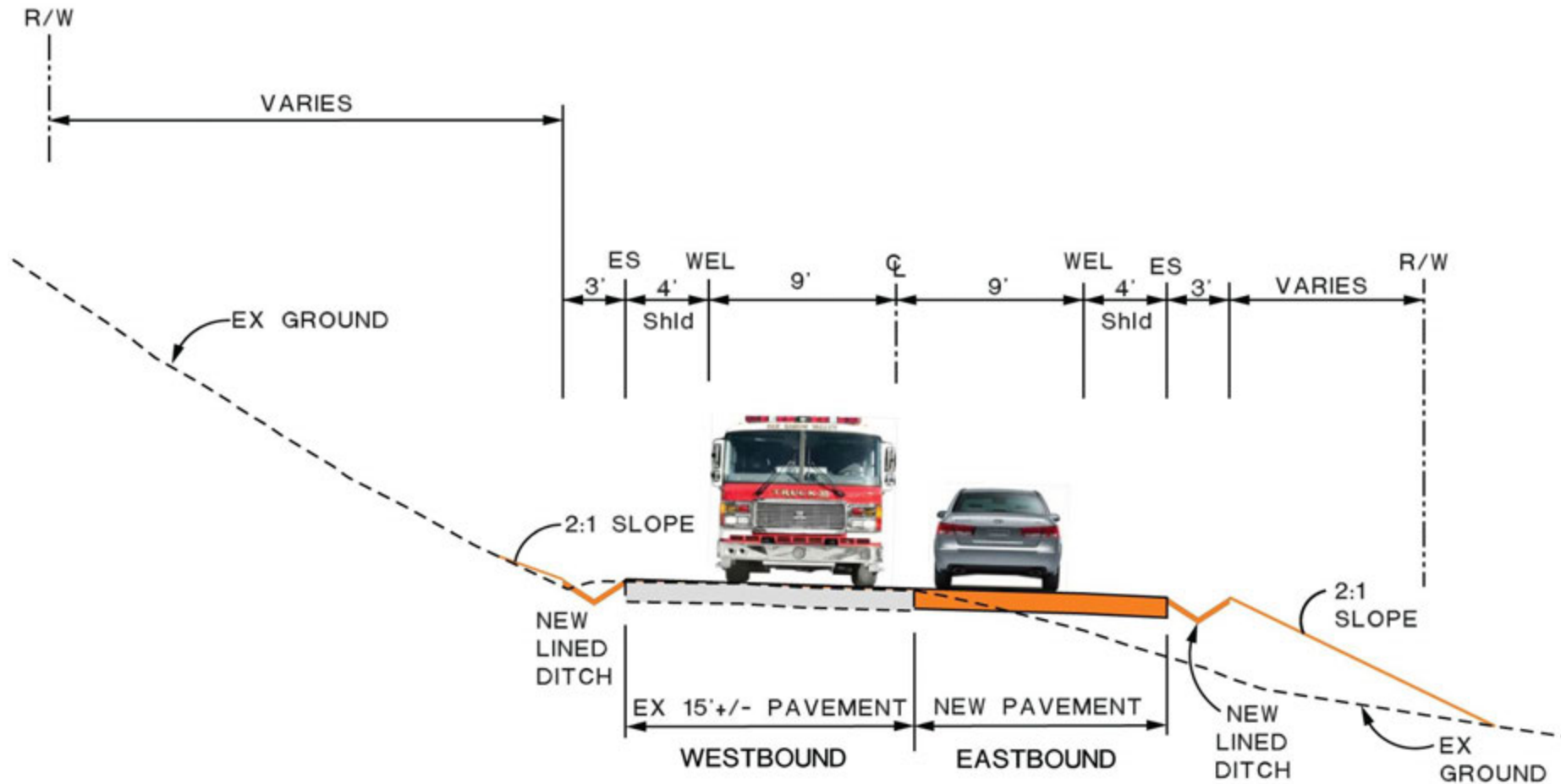


- Safety Improvement
- 1,300 feet in length

# Patterson Pass Road EXISTING CONDITIONS



# PLANNED SAFETY IMPROVEMENTS



# Project Benefits

Improves  
Safety

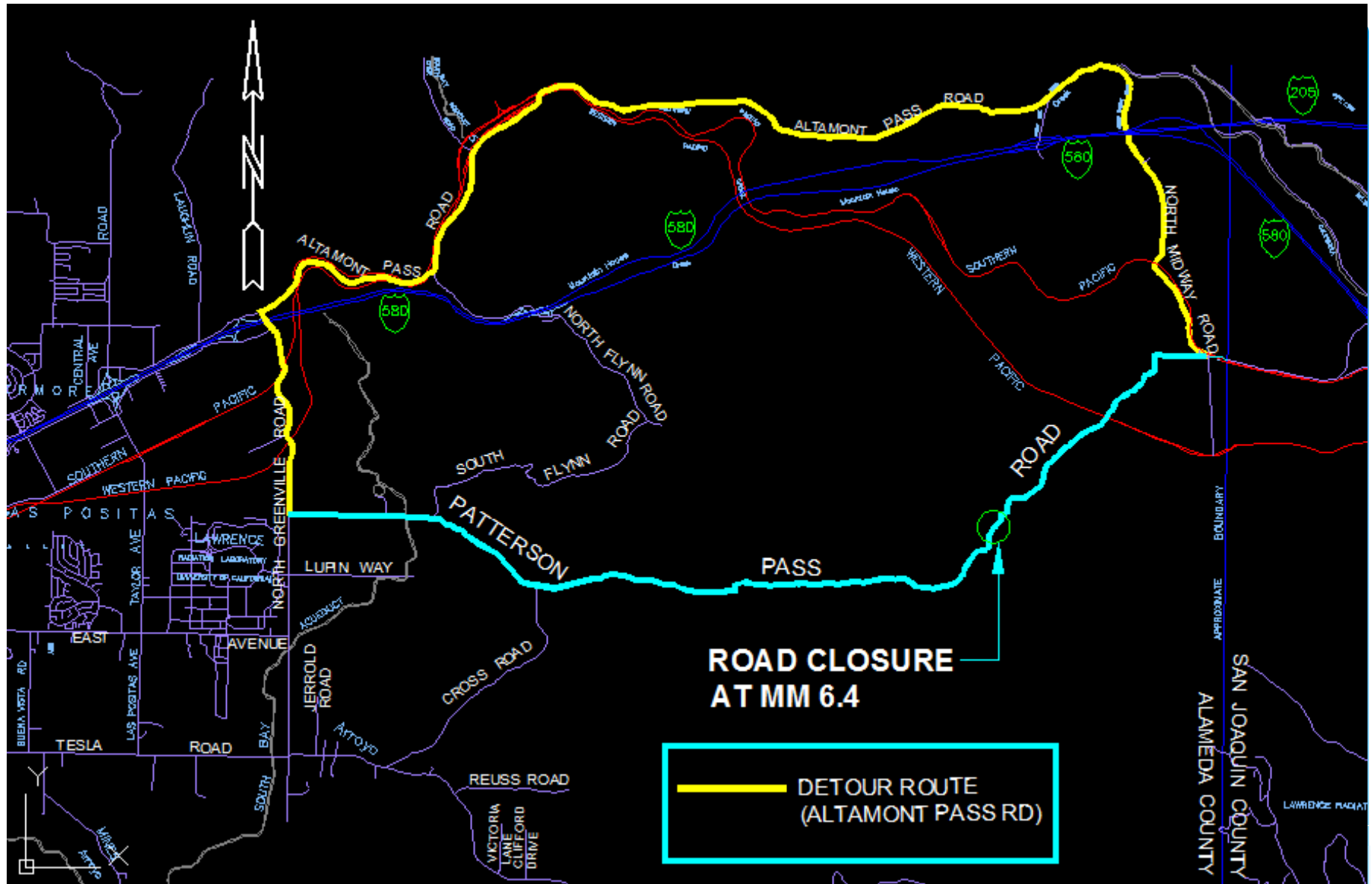
Improves  
Access

Maintains  
Rural  
Character

# Construction

- **Road Closure (24 hours/7 days) at milepost marker 6.4** – required to complete construction (approx. 60 days)
- Remaining sections of Patterson Pass Road open/accessible to local residents
- Emergency vehicle access maintained
- **Traffic Delays** – expected during construction
- **Detour Route** – Detour signs directing traffic to alternate route onto Altamont Pass Road





# Detour Plan

*Patterson Pass Road Mile Marker 6.4 – Safety Improvements*



Public Works Agency  
Alameda County



# Anticipated Schedule

Mobilization

June 2015

Start  
Construction

July 7, 2015

End  
Construction

September 2015

# Project Information & Contact Information

## Online:

- *Project information and updates will be posted online at [www.acgov.org/pwa](http://www.acgov.org/pwa)*

## Contact Information:

- *510-670-5591 or email: [info@acpwa.org](mailto:info@acpwa.org)*